

## Product Datasheet - WSL 5050 Series - Fixed lights

The Wrightstyle 5050 series range of glazing systems provides an unlimited number of fenestration options. Utilising a wide range of high quality steel and stainless steel profile shapes, it provides countless possibilities.

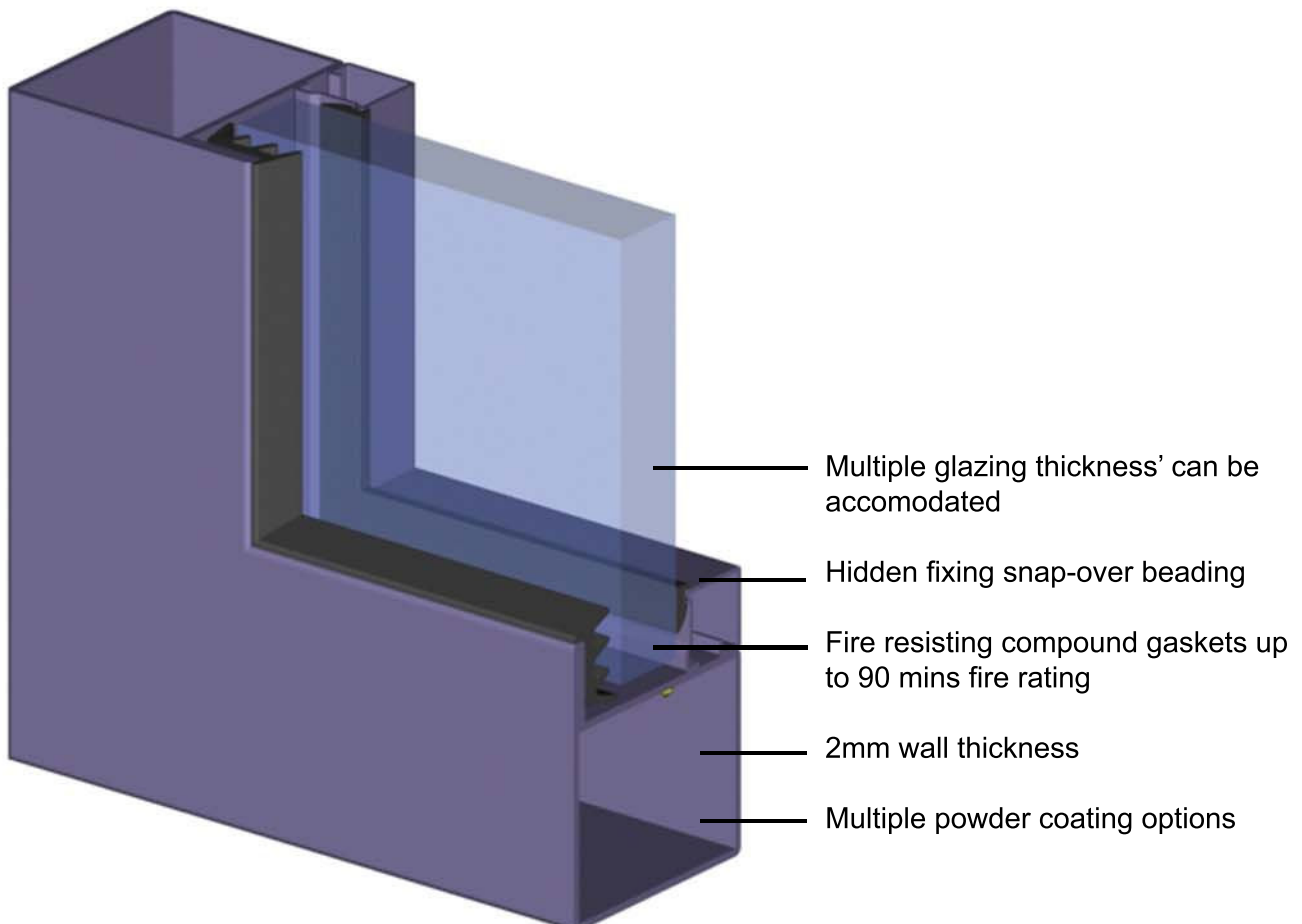
Multiple configurations of doors, screens and windows can be produced from Wrightstyle's vast range of profiles; an integral part of Wrightstyle's total glazing system solutions.

Profiles are produced from cold rolled pre-galvanised strip, manufactured to strict production tolerances from 2mm steel.

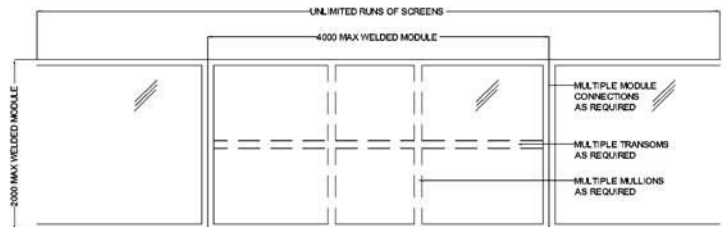
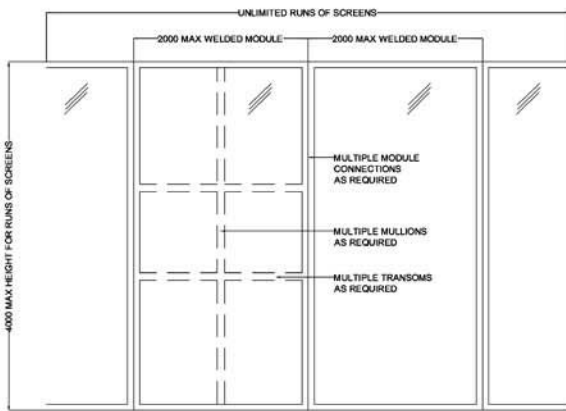
Modern manufacturing processes allow us to produce steel glazing systems, which combine the inherent strength and durability of steel, with the aesthetic qualities normally associated with aluminium systems. The following pages provide a brief overview of the capabilities of the systems.

- Competitively priced
- Multiple fenestration options
- High quality pre-sendzimir galvanising
- Internal & external surface protection
- 2mm wall thickness
- Tested to up 2 hours fire resistance
- Multiple profile options
- Multiple tape or gasket glazing options
- Can be supplied in bar length or or fully fabricated

### WSL 5050 Series - Profile Configuration (colours shown for clarity)



## Product Datasheet - WSL 5050 Series - Fixed Lights



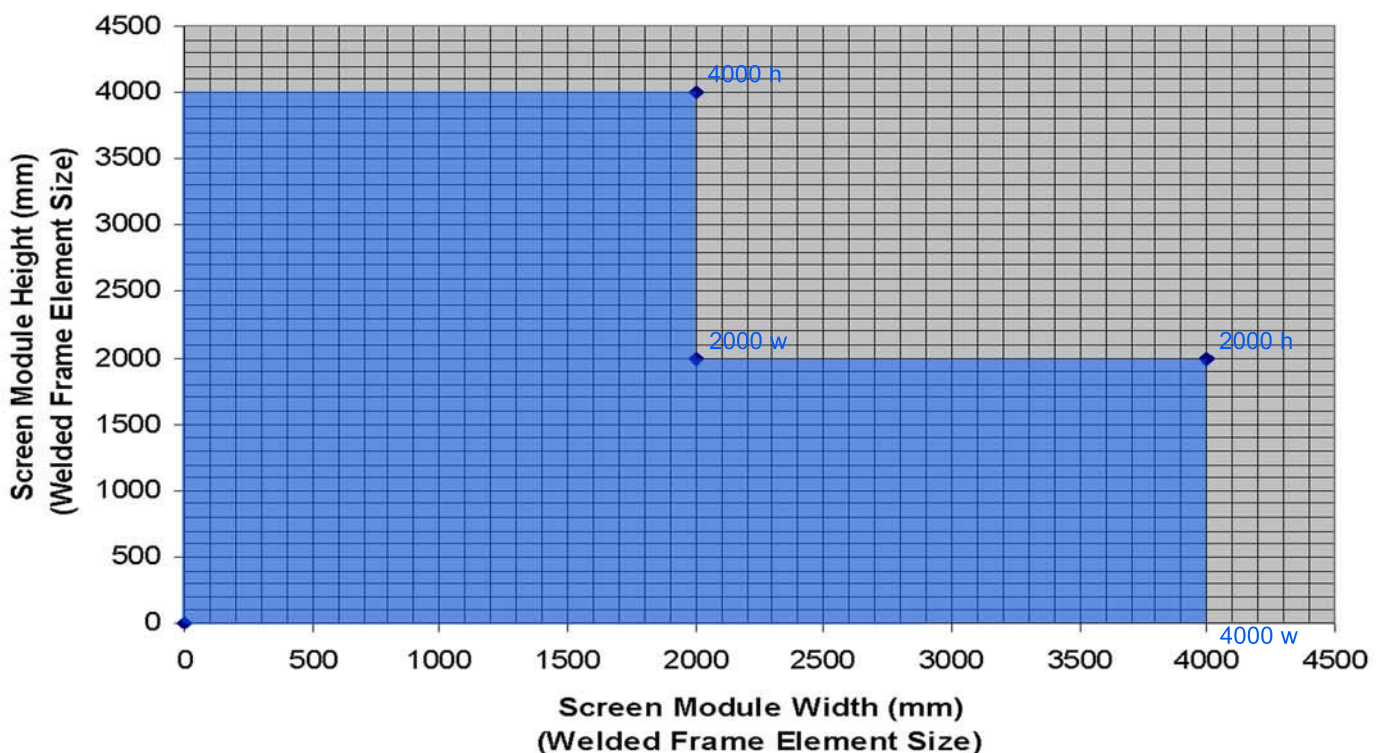
### WSL 5050 series permissible configurations 30, 60, 90 & 120 mins integrity only

Framing may be supplied in multiple configurations to suit the application, with the following conditions:

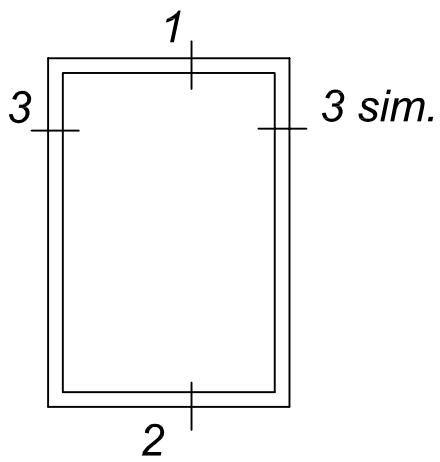
- Maximum individual welded element size of 4000mm x 2000mm (in either aspect). Elements may be connected together to form unlimited runs of screens.
- Structural fixings at nominally 500mm centres max, with module joins at 300mm centres max.
- Tape glazing up to 120 mins, gasket glazing up to 90mins.
- Size limitations shown consider both fire test data and maximum powder coating line size.
- Wrightstyle doors & windows may be incorporated into the framing configuration to the required timescale.

Directions:

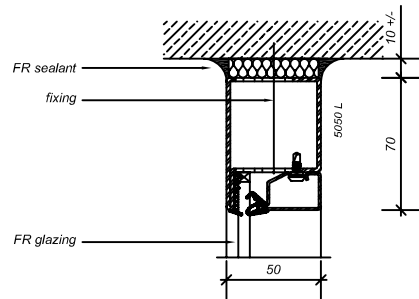
Plot your required screen size on the chart below. Current test data allows for any individual welded element frame size within the blue areas. These elements may be connected together to make runs of screens, and may also be sub divided using additional mullions / transoms.



Note: Additional conditions may apply. Please check test data

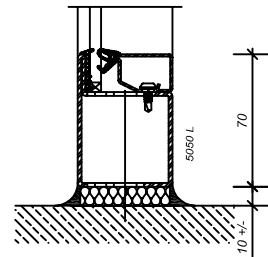
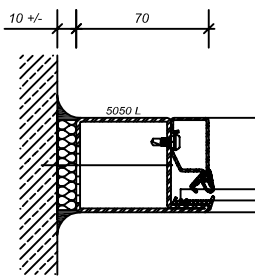


1



3 sim.

2



**WRIGHTSTYLE 5050 SERIES  
FIXED WINDOW**

Elevation NTS/details 1:4 @ A4

Approved options:

- With or without mullions and transoms