

## Product Datasheet - WSL 6050F1 Series - Double Doors

The Wrightstyle 6050F1 series range of glazing systems provides an unlimited number of fenestration options. Utilising a range of high quality steel profile shapes it provides countless possibilities for fire insulated applications.

Multiple configurations of doors, screens and windows can be produced from Wrightstyle's vast range of profiles; an integral part of Wrightstyle's total glazing system solutions.

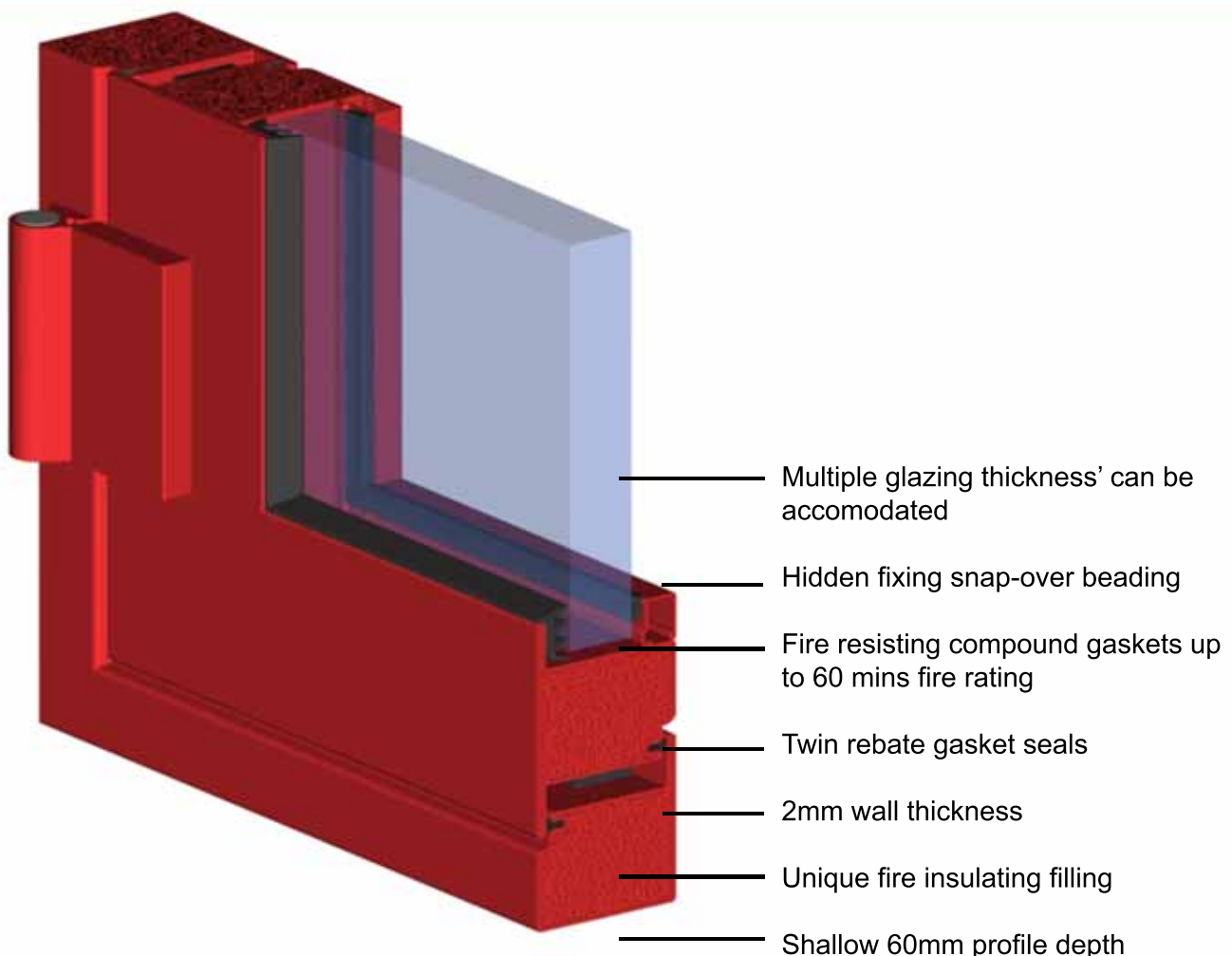
Profiles are produced from cold rolled hollow sections, manufactured to strict production tolerances from 2mm steel, punched and filled with a unique infilling material to provide an enhanced thermal barrier.

Modern manufacturing processes allow us to produce steel glazing systems, which combine the inherent strength and durability of steel, with the aesthetic qualities normally associated with aluminium systems. The following pages provide a brief overview of the capabilities of the systems.

- Competitively priced
- Multiple framing options
- High quality sendzimir galvanising
- Internal & external surface protection
- 2mm steel thickness
- Tested to 60 minutes fire rating
- Multiple hardware options
- Multiple tape or gasket glazing options
- Fully enclosed profile design for ease of fabrication and superior flat finish
- Can be supplied in bar length, semi-prepared kit form or fully fabricated

Fire rated up to 60 mins as unlatched option with pull handles or latched option with lever handles

### WSL 6050F1 Series - Door Configuration (colours shown for clarity)

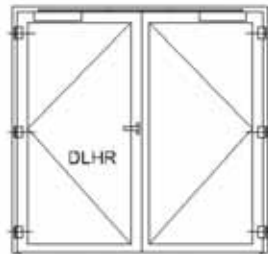


## Product Datasheet - WSL 6050F1 Series - Double Doors

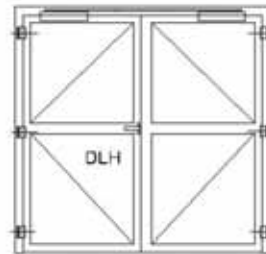
DRHR Open Out  
Active Leaf - Right



DLHR Open Out  
Active Leaf - Left



DLH Open In  
Active Leaf - Left



DRH Open In  
Active Leaf - Right



### WSL 6050F1 series door permissible dimensions 30 mins integrity and insulation

**Type:**

WSL 6050F1 Series doors unlatched or single point latch to active leaf, shoot bolts to inactive leaf.

WSL 6050F1 Series doors two point latch to active leaf, nothing to inactive leaf.

WSL 6050F1 Series doors two point latch to active leaf, shoot bolts to inactive leaf.

Maximum Door Height  
2600mm clear passage

2800mm clear passage

3000mm clear passage

Maximum Door Width  
2530mm clear passage

2760mm clear passage

2792mm clear passage

Fire Rating  
30 Mins integrity & insulation

30 Mins integrity & insulation

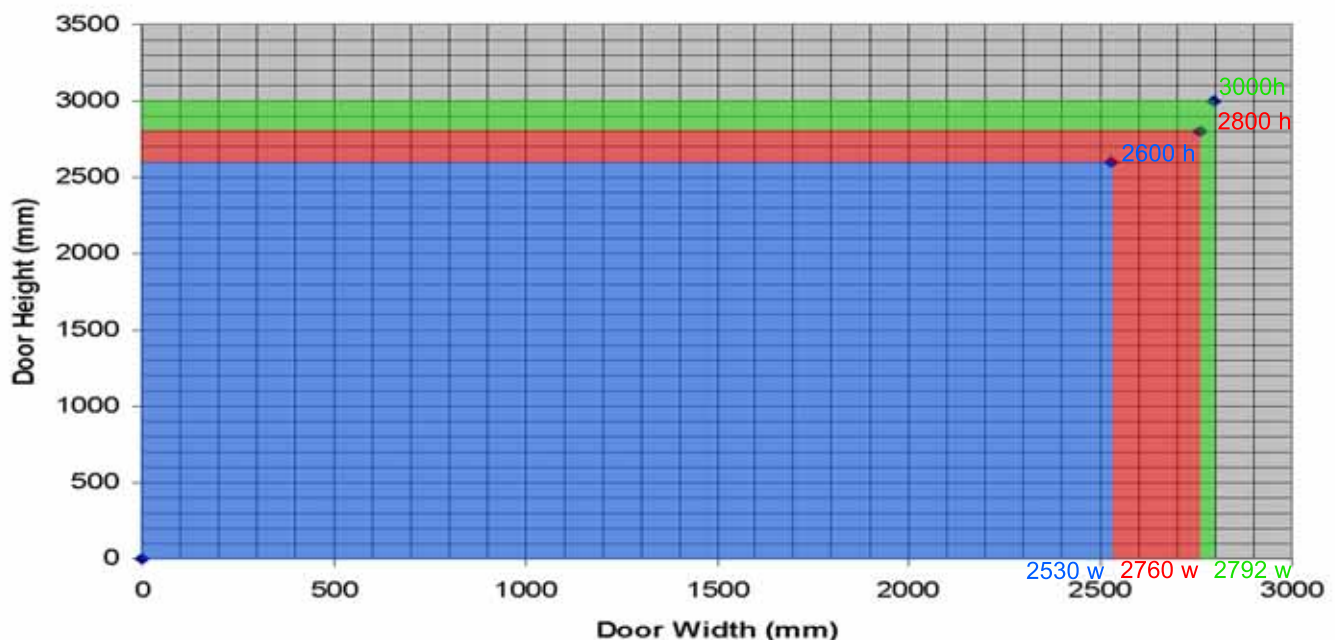
30 Mins integrity & insulation

**Directions:**

Plot your required door size on the chart below. Current test data allows for any clear passage size within the red, green & blue areas. If the door size falls completely within the blue area then the doors may be installed with single point latch to active leaf and shoot bolts installed to inactive leaf.

If the door size falls partly within the red area then the doors must be installed with two-point latch to active leaf and nothing installed to the inactive leaf.

If the door size falls partly within the green area then the doors must be installed with two-point latch to active leaf and shoot bolts installed to the inactive leaf.



Note: Additional conditions may apply. Please check test data

## Product Datasheet - WSL 6050F1 Series - Double Doors

### WSL 6050F1 series door permissible dimensions 60 mins integrity and insulation

**Type:**

WSL 6050F1 Series doors unlatched or single point latch to active leaf, shoot bolts to inactive leaf.

WSL 6050F1 Series doors two point latch to active leaf, nothing to inactive leaf.

WSL 6050F1 Series doors two point latch to active leaf, shoot bolts to inactive leaf.

**Maximum Door Height**

2500mm clear passage

2600mm clear passage

2640mm clear passage

**Maximum Door Width**

2525mm clear passage

2760mm clear passage

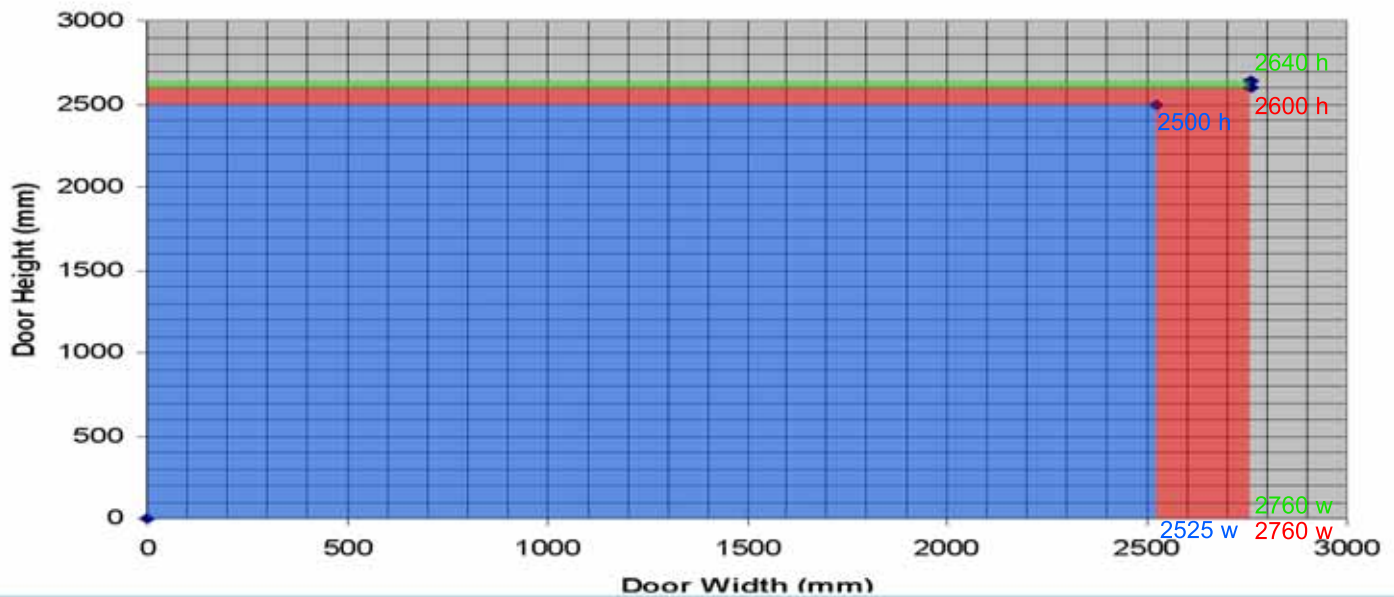
2760mm clear passage

**Fire Rating**

60 Mins integrity and insulation

60 Mins integrity and insulation

60 Mins integrity and insulation



### WSL 6050F1 series door permissible dimensions 90 mins integrity, 30 mins insulation

**Type:**

WSL 6050F1 Series doors unlatched or single point latch to active leaf, shoot bolts to inactive leaf.

**Maximum Door Height**

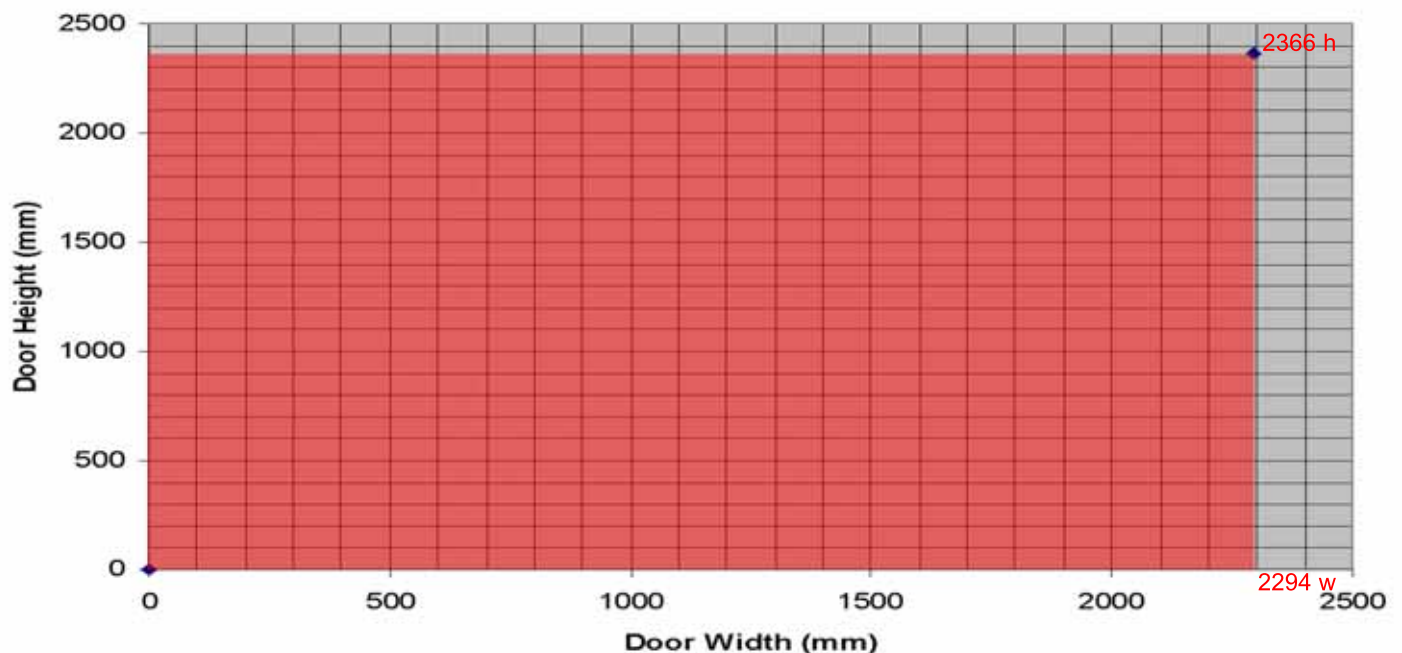
2366mm clear passage

**Maximum Door Width**

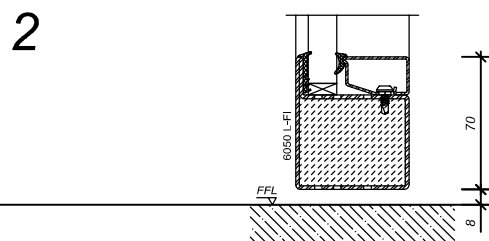
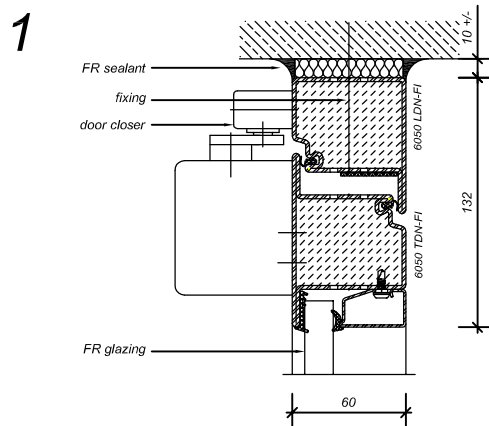
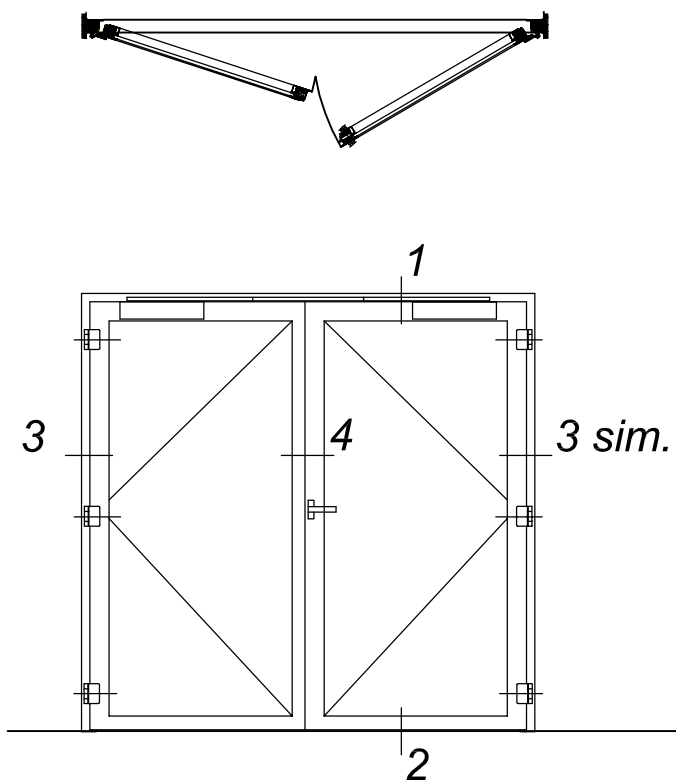
2294mm clear passage

**Fire Rating**

90 Mins integrity, 30mins insulation

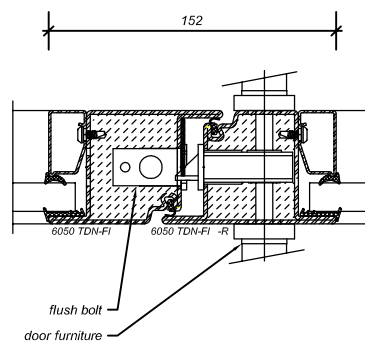
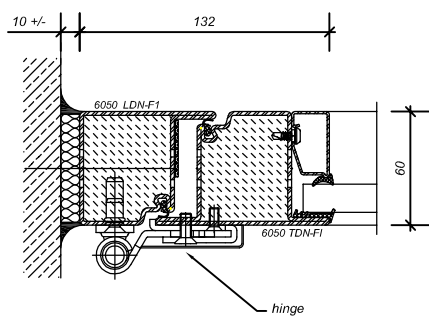


Note: Additional conditions may apply. Please check test data



3 sim.

4



## WRIGHTSTYLE 6050-F1 SERIES DOUBLE DOOR

Elevation NTS/details 1:4 @ A4

Approved options:

- With or without mullions and transoms
- Glass/panel infill's
- Choice of RH/LH with opening to outside or inside
- Fixed sidelights and top lights
- Unlatched

**Southern Steel Windows Ltd**

PH: 03 218 9278 INVERCARGILL